



WNAS2R

Owner's Manual

Important Safeguards

1. Read these instruction manual
2. Keep the manual
3. Heed all warnings
4. Follow all instructions
5. Do not use this equipments near water or moisture
6. Clean only with dry cloth
7. Do not block any ventilation openings. Install in accordance with the manufacturer's instructions
8. Do not use near any heat sources such as radiators, stoves or heat registers
9. Use grounding-type plug
10. Use only attachments/accessories specified by the manufacturers
11. Unplug this equipment during lightning storms or when unused for long periods of time
12. Refer all servicing to qualified service personnel. Servicing is required when the equipment has been damaged in any way, such as power-supply cord or plug is damaged, liquid has been spilled or objects have fallen into the equipment, the equipment has been exposed to rain or moisture, does not operate normally, or has been dropped. Manufacturer does not take any responsibility for repairing due to misused operation
13. Do not put any liquid material onto the equipment
14. Remove plug after checking the equipment power is off. Otherwise, it may cause equipment failure

WARNING: Unqualified personnel are not able to repair this equipments. To reduce the risk of electric shock, do not open top/rear cover on purpose.

About Waversa Systems

Thanks for choosing

Waversa Systems' WNAS2R.

Recent development of innovative IT/ Digital technology brings vast changes in concept and environment of old Analog based High-end Audio market.

Waversa Systems is leading

New High-end Audio paradigm combining world top class IT with Digital technology under the goal of developing sophisticated sound and design.

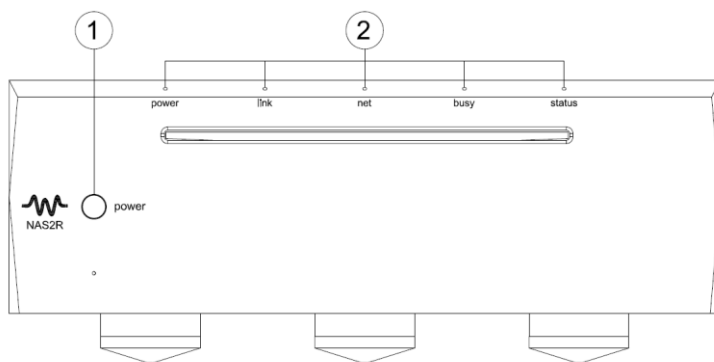
Waversa Systems is

Happy with your purchasing equipments and promises to become best partners for your audio life.

CEO Junho Shin

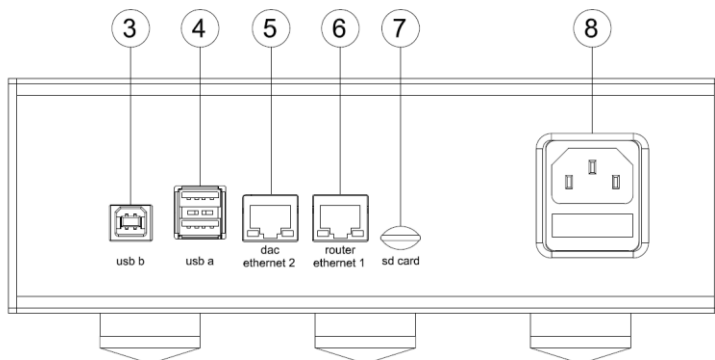
WNAS2R

Front Panel



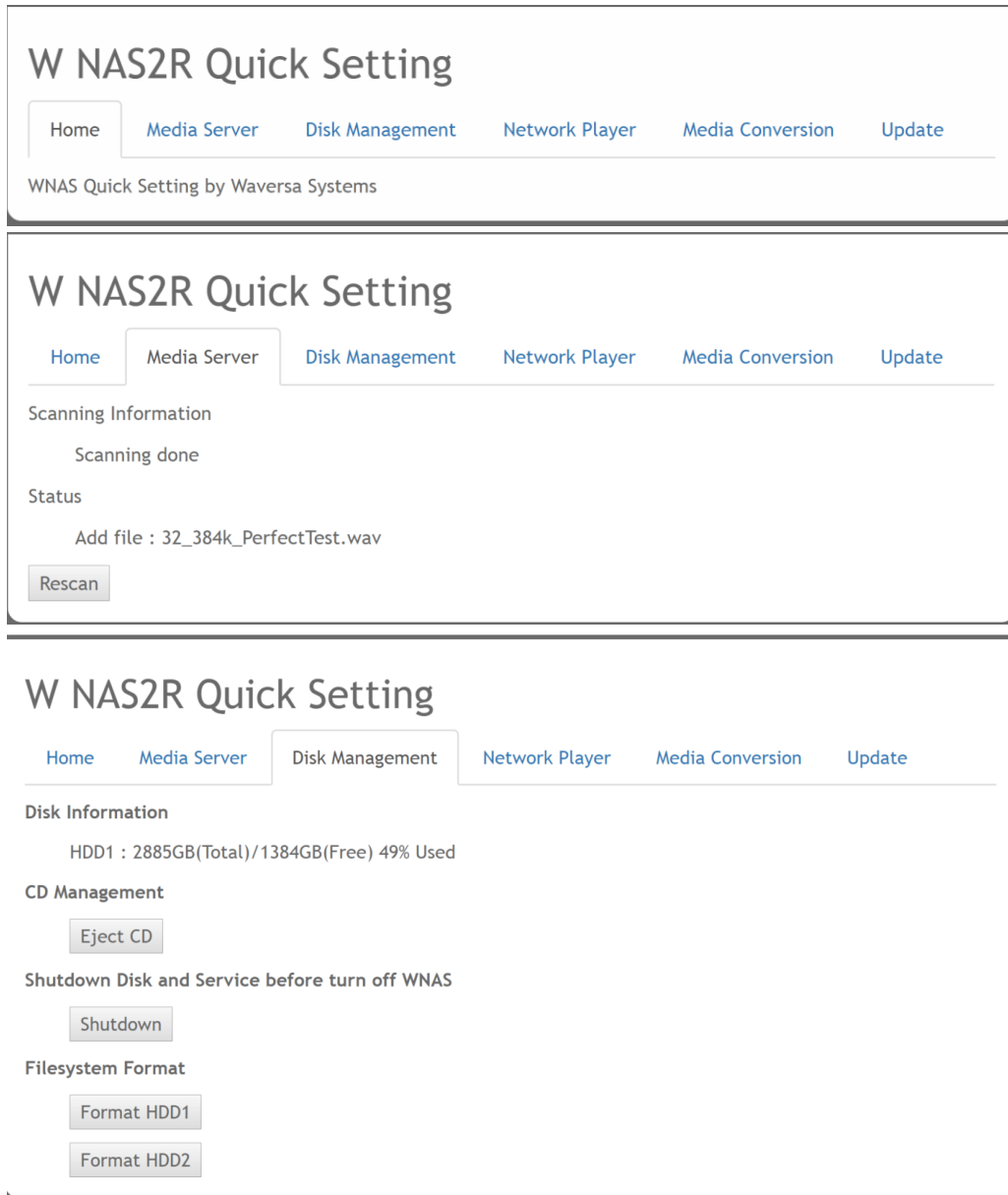
- ① Power button
- ② LED Status
- ③ CD Drive

Rear Panel



- ① Power button
- ② LED Status
- ③ USB B – Maintenance
- ④ USB A x 2
- ⑤ Ethernet Port to DAC
- ⑥ Ethernet Port to Router
- ⑦ SD card slot : Software update
- ⑧ AC Input

How To Network Quick Setting 1.



1. In PC / Mobile device, WNAS2R remote control mode will be activated
2. Connect WNAS2R & router with Ethernet LAN Cable
3. Connect it into network with PC / Mobile device
4. As the image above, control page will be appear on with typing WNAS2R's IP address into Explorer or Safari
5. Finding IP address will be described in next page.

How To Network Quick Setting 2.

W NAS2R Quick Setting

[Home](#)[Media Server](#)[Disk Management](#)[Network Player](#)[Media Conversion](#)[Update](#)

Support USB DAC ☒

Apply

W NAS2R Quick Setting

[Home](#)[Media Server](#)[Disk Management](#)[Network Player](#)[Media Conversion](#)[Update](#)

Media Conversion - Not running

☐ WAV ☐ FLAC ☐ APE -> WAV ☐ APE -> FLAC

WARNING : This will change all media file to specified file format in background

Convert Media(Whole disk)

Media Conversion(convert directory) - Not running

☐ WAV ☐ FLAC ☐ APE -> WAV ☐ APE -> FLAC

Convert Media(convert directory only)

W NAS2R Quick Setting

[Home](#)[Media Server](#)[Disk Management](#)[Network Player](#)[Media Conversion](#)[Update](#)

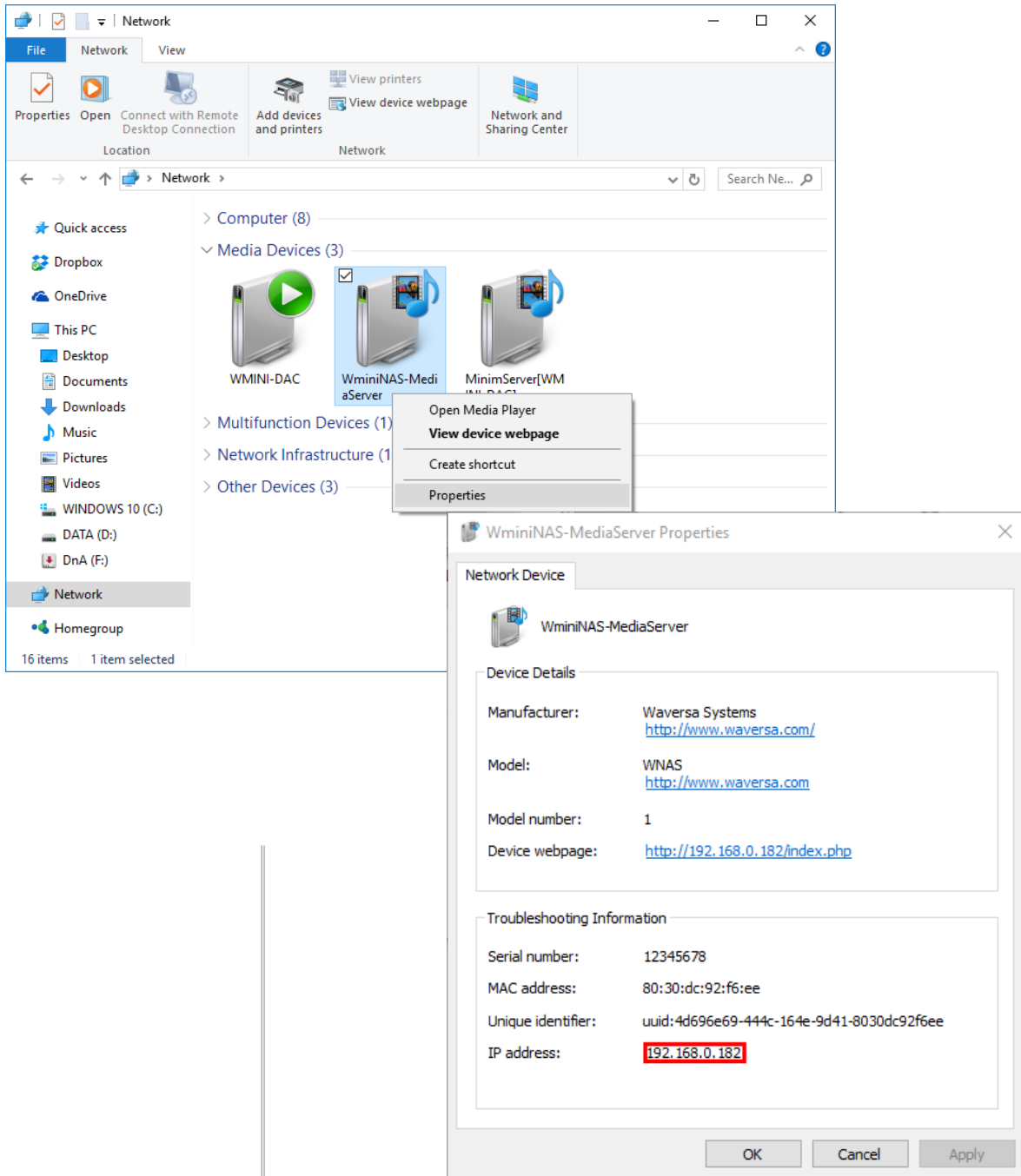
Current version : 1.2.1

Update

MENU

- Media Server
 - Show scan status and Rescan media files in WNAS2R
- Disk Management
 - Show disk status, and various control related disk
- Network Player activation for USB DAC
- Media Conversion
 - Convert media files to specific format to enhance sound quality
- Update Firmware

How To Find IP Address



※ To find IP address in Windows

: Mouse right click from Windows search → Media device → WNAS-Media Server → property → IP address in the below

Specification for the WNAS2R

System Type	Waversa System Processor
DLNA Server	Waversa Systems Media Server(DLNA)
Clock	MEMS-Based Clock
Input	<ul style="list-style-type: none">• 2 x USB A• 2 x USB B for factory use• Micro SD *1 (for FW update)
Internal Disk	1x Internal 2.5 inch HDD/SSD 1x Internal 3.5 inch HDD
Outputs	2x Ethernet Port used as Ethernet hub
Power Requirements	90~120 VAC / 180~240 VAC @ 50~60Hz
Dimension	W 214 x L 324 x H 80 mm
Weight	5 Kg

NOTES: All specifications are accurate at the time of printing.
Waversa Systems reserves the right to adjust specifications without notice.



404, 10-9, Hwangsaoul-ro258beon-gil,
Bundang-gu, Seongnam-si, Gyeonggi-
do, Republic of Korea

<http://www.waversa.com>

email: junho@waversa.com