



# WMiniPSU

## Owner's Manual

## Important Notice

1. Read these instruction manual
2. Keep the manual
3. Keep remind all warnings
4. Follow all instructions
5. Do not use this equipments near water or moisture
6. Clean only with dry cloth
7. Do not block any ventilation openings. Install in accordance with the manufacturer's instructions
8. Do not use near any heat sources such as radiators, stoves or heat registers
9. Use grounding-type plug
10. Use only attachments/accessories specified by the manufacturers
11. Unplug this equipment during lightning storms or when unused for long periods of time
12. Refer all servicing to qualified service personnel. Servicing is required when the equipment has been damaged in any way, such as power-supply cord or plug is damaged, liquid has been spilled or objects have fallen into the equipment, the equipment has been exposed to rain or moisture, does not operate normally, or has been dropped. Manufacturer does not take any responsibility for repairing due to misused operation
13. Do not put any liquid material onto the equipment
14. Remove plug after checking the equipment power is off. Otherwise, it may cause equipment failure.

**WARNING: Unqualified personnel are not able to repair this equipments.**  
**To reduce the risk of electric shock, do not open bottom cover on purpose.**

Thanks for choosing

Waversa Systems' WMiniPSU.

Recent development of innovative IT/Digital technology brings vast changes in concept and environment of old Analog based High-end Audio market.

Waversa Systems is leading

New High-end Audio paradigm combining world top class IT with digital technology under the goal of developing sophisticated sound and design.

Waversa Systems is

Happy with your purchasing equipments and promises to become best partners for your audio life.

CEO Junho Shin

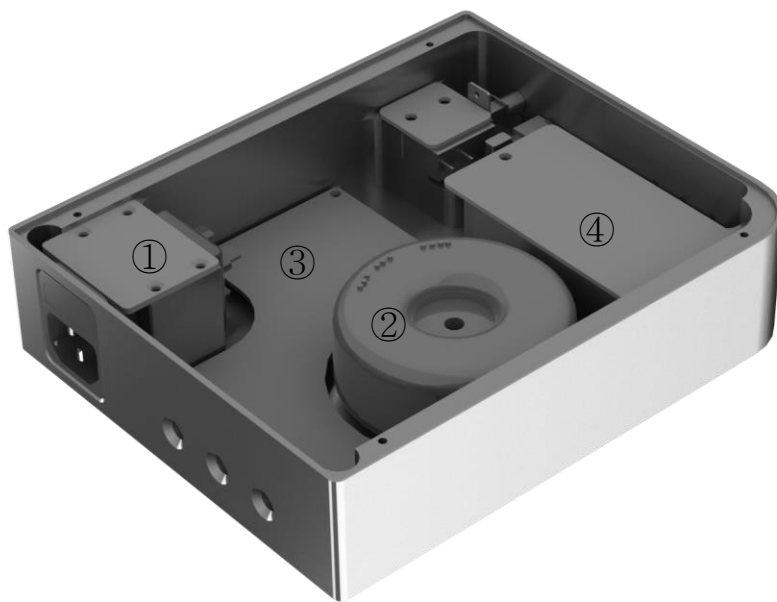
- Dual bank battery operated power supply for WMini Series
- Dual bank 4 battery applied for constant battery supply
- All Linear power supply system
- Separated 12V Linear power output for high power device up to 1A



- ① Power button
- ② Power indicator
- ③ Battery Bank 1 indicator
- ④ Battery Bank 2 indicator
- ⑤ Battery Condition indicator



- ① Linear Power Output
- ② Battery power output 1
- ③ Battery power output 2
- ④ AC Input



- ① Ac Input Filter
- ② Power Transformer
- ③ Controller / Charger
- ④ 4x Battery Bank

2000mAh x 4, 2 battery for each bank

Linear constant voltage output

WMiniDAC(Battery) / WMiniHPA(Battery) / WMiniNAS(Linear)

- Linear : 12V
- Battery Bank 1, 2 : 8.4 ~ 7.5V
- WMini Series can operate from 7V to 24V

90~120 VAC / 180~240 VAC @ 50~60Hz

W 180 x L 150 x H 55 (Spike 7 mm)

3 Kg

**NOTES: All specifications are accurate at the time of printing.  
Waversa Systems reserves the right to adjust specifications without  
notice.**



403, 10-9, Hwangsaoul-ro 258beon-gil, Bundang-gu,  
Seongnam-si, Gyeonggi-do, Republic of Korea

<http://www.waversa.com>

email: [junho@waversa.com](mailto:junho@waversa.com)